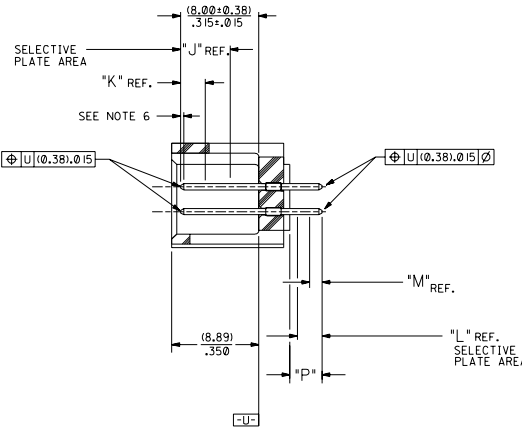
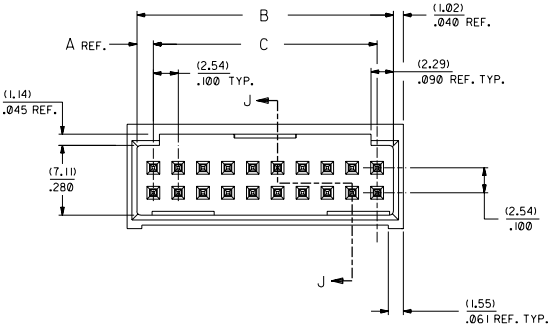
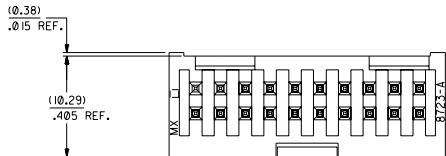
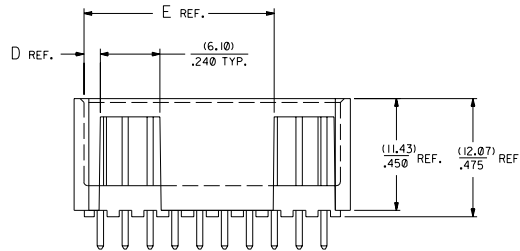


RECOMMENDED P.C. BOARD HOLE LAYOUT



SECTION J-J



CKT.	DIM. "A"		DIM. "B"		DIM. "C"	DIM. "D"	DIM. "E"				
	DIM. "A"	DIM. "B"	DIM. "A"	DIM. "B"							
06	(1.68) .066	(8.43) .332	(5.08) .200	(1.68) .066							
08	(1.68) .066	(10.97) .432	(7.62) .300	(1.68) .066							
10	(1.68) .066	(13.51) .532	(10.16) .400	(4.22) .166							
12	(1.68) .066	(16.05) .632	(12.70) .500	(4.22) .166							
14	(1.68) .066	(18.59) .732	(15.24) .600	(6.76) .266							
16	(1.68) .066	(21.13) .832	(17.78) .700	(6.76) .266							
18	(1.68) .066	(23.67) .932	(20.32) .800	(9.30) .366							
20	(1.68) .066	(26.21) 1.032	(22.86) .900	(1.68) .066	(19.46) .766						
22	(1.68) .066	(28.75) 1.132	(25.40) 1.000	(1.68) .066	(22.00) .866						
24	(1.68) .066	(31.29) 1.232	(27.94) 1.100	(1.68) .066	(24.54) .966						
26	(1.68) .066	(33.83) 1.332	(30.48) 1.200	(1.68) .066	(27.08) 1.066						
28	(1.68) .066	(36.37) 1.432	(33.02) 1.300	(1.68) .066	(29.62) 1.166						
30	(1.68) .066	(38.91) 1.532	(35.56) 1.400	(1.68) .066	(32.16) 1.266						
32	(1.68) .066	(41.45) 1.632	(38.10) 1.500	(1.68) .066	(34.70) 1.366						
34	(1.68) .066	(43.99) 1.732	(40.64) 1.600	(1.68) .066	(37.24) 1.466						
36	(1.68) .066	(46.53) 1.832	(43.18) 1.700	(1.68) .066	(39.78) 1.566						
38	(1.68) .066	(49.07) 1.932	(45.72) 1.800	(1.68) .066	(42.32) 1.666						
40	(1.68) .066	(51.61) 2.032	(48.26) 1.900	(1.68) .066	(44.86) 1.766						
42	(1.68) .066	(54.15) 2.132	(50.80) 2.000	(1.68) .066	(47.40) 1.866						
44	(1.68) .066	(56.69) 2.232	(53.34) 2.100	(1.68) .066	(49.94) 1.966						
46	(1.68) .066	(59.23) 2.332	(55.88) 2.200	(1.68) .066	(52.48) 2.066						
48	(1.68) .066	(61.77) 2.432	(58.42) 2.300	(1.68) .066	(55.02) 2.166						
50	(1.68) .066	(64.31) 2.532	(60.96) 2.400	(1.68) .066	(57.56) 2.266						
52	(1.68) .066	(66.85) 2.632	(63.50) 2.500	(1.68) .066	(60.10) 2.366						
54	(1.68) .066	(69.39) 2.732	(66.04) 2.600	(1.68) .066	(62.64) 2.466						
56	(1.68) .066	(71.93) 2.832	(68.58) 2.700	(1.68) .066	(65.18) 2.566						
58	(1.68) .066	(74.47) 2.932	(71.12) 2.800	(1.68) .066	(67.72) 2.666						
60	(1.68) .066	(77.01) 3.032	(73.66) 2.900	(1.68) .066	(70.26) 2.766						
62	(1.68) .066	(79.55) 3.132	(76.20) 3.000	(1.68) .066	(72.80) 2.866						
64	(1.68) .066	(82.09) 3.232	(78.74) 3.100	(1.68) .066	(75.34) 2.966						
66	(1.68) .066	(84.63) 3.332	(81.28) 3.200	(1.68) .066	(77.88) 3.066						
68	(1.68) .066	(87.17) 3.432	(83.82) 3.300	(1.68) .066	(80.42) 3.166						
70	(1.68) .066	(89.71) 3.532	(86.36) 3.400	(1.68) .066	(82.96) 3.266						
72	(1.68) .066	(92.25) 3.632	(88.90) 3.500	(1.68) .066	(85.50) 3.366						

- U ADD -3803 OPT  
DCP-2804-2268  
DMORGAN 04/05/20
- T LEAD FREE  
USP2004-170  
RUWITE 04/04/26
- S ADD -3802 OPTION  
ECN #022804-002  
DMORGAN 04/01/2
- R2 TAB DIF DIM 6 CIR  
ECN #010999-0145  
DMORGAN 56/09/01
- ADD WDG LATCH NOTE  
ECN #010998-0399  
DMORGAN 56/06/23
- R1 ADDED SHEET 7
- R REMOVE FOP NO.1.  
PER ECR NO US0208  
03-23-96
- O REMOVE FOP NO.1.  
PER ECR NO US0205  
05-19-94
- P CHGD WINDOW NOTES  
PER ECR NO US0316  
05-04-93
- 5 R2 O CHANGED MATERIAL  
PER ECR NO US0146  
01-22-93
- 3 R2 N REVISED & REDRAWN  
PER ECR NO US0173  
05-20-92
- 1 L U LTR REVISIONS

NOTES:

- 1- 20 CIRCUIT SIZE SHOWN FOR ILLUSTRATION PURPOSES.
- 2- PIN PUSHOUT FORCE: (17.79 N)/4 LBS.
- 3- PINS MUST MEET SOLDERABILITY SPEC. MIL-STD-202 METHOD 208B.
- 4- WINDOW NOT AVAILABLE ON 6 AND 8 CIRCUIT SIZE.
- 5- FOR CHARTED DIMENSIONS AND ASSEMBLY NO.S NOT SHOWN ON THIS SHEET - SEE SHEET 2.
- 6- ROW TO ROW PIN HEIGHT VARIATION MUST NOT EXCEED (0.13)/.005 IN.
- 7- PRODUCT CONFORMS TO PS-8723.

MATERIAL:

SHROUDED WAFER: GLASS FILLED POLYESTER, 94V-0; COLOR: BLACK.  
PINS: PHOSPHOR BRONZE,  
SEE SHEET 2 FOR FINISHES.

ASSEMBLY STYLE "A" AND "B"

DIMENSIONS SHOWN METRIC INCH  
 UNLESS OTHERWISE SPECIFIED  
 DIM. METRIC DIM. INCH  
 1 P.L.A.K.E. + .005 --- 1  
 2 P.L.A.K.E. + .01 ± 0.13  
 3 P.L.A.K.E. --- ± 0.25  
 DIM. METRIC APPLICABLE MUST  
 MEET WITH DIMENSIONS  
 DATE 08/22/07  
 DRAWN BY RB  
 CHECKED BY  
 DATE 08/22/07  
 SCALE 4:1:1  
 REVISE ONLY ON CAD SYSTEM  
 SALES ASSEMBLY  
 WAFER - STRAIGHT MT. FULLY SHROUDED  
 .1000 GRID - FOR USE W/.005 SQ. PINS  
 WITH .066 END WALLS  
 MOLEX INCORPORATED  
 MOLEX INCORPORATED  
 SHEET NO. 1 OF 7  
 DATE 08/22/07  
 USA  
 SEE CHART SDA-8723-\*\*\*\*\*  
 FILE NO. 58723A11  
 REV. NO. 1  
 DATE 08/22/07  
 SCALE 4:1:1  
 DRAWN BY RB  
 CHECKED BY  
 DATE 08/22/07  
 SCALE 4:1:1

